

GOL PUMPS



G.P.T.CO

www.golpumps.com



**Vertical
GPE/GPEB -Manual**

FOREWORD

We appreciate for you selection of our pump for use. Before you using it, we suggest you to read this booklet carefully, if you had any question, please refer to our distributor, they might give you satisfactory instructions. And, before or in use, if maintain the original of situation, contact our distributor or the dealer, or you may ask the technicians who are specialized in electric machineries.

The correct use will ensure the pump always in good condition and enlong the servicing life.

WARNING:

Before install this pump makes sure to read and follow this instruction carefully.

1. The pump must be installed by a qualified electrician.
2. The pump must be connected to an approved box as per the local electrical code.
3. The electrical box must have a motor-control switch.
4. The pump is not provided with motor protection. During the installation the pump must be protected for overload and overcurrent as per the local code.
5. If the pump is intended for sewage purpose, then the tank is to be vented in accordance with local plumbing codes.
6. **WARNING:** The pump is not to be installed in locations classified as hazardous in accordance with the National Electrical Code, ANSI/NFPA 70.
7. **CAUTION:** Risk of electric shock. Do not remove cord and strain relief. Do not connect conduit to pump. (for three phase code-connected submersible pump)
8. **CAUTION:** This pump has been evaluated for use with water only.

Grounding Instructions (for cord and plug-connected pumps)

WARNING: Risk of electric shock-This pump is supplied with a grounding conductor and grounding-type attachment

plug. To reduce the risk of electric shock, be certain that it is connected only to a properly grounded, grounding-type receptacle.

OPERATION INSTRUCTION

(A) Note before using

- (1) Never pull the cable to move or install the pump; by using the pump handle to carry it. Pulling the cable may result in electricity leakage.
- (2) Properly located the pump during the shipment, also avoid the pump being cracked.

(3) Please install a Ground Fault Circuit Interrupt in circuit to ensure the safety operation. Due to long-term use, the cable may have detection of the surface; the Ground Fault Circuit Interrupt is of an important device.

(4) Confirm the supply voltage comply with specified in the name plate.

(5) Check the pump is in normal running when the power starts on. If the pump cannot run smoothly, please check whether the impeller squeezed because of rust.

(6) Confirm the motor is rotating in correct direction.

(a) Single phase: the single phase motor has a fixed rotating direction in spite of cable connection.

(b) 3 phase motor: if the motor runs reversely, it only needs to changed any two wires connection among the 3 wires.

Note: If the motor turns reversely, abnormal sound and vibration can be found; and the water volume is obviously reduced. Also the motor's service life will be shortened.

(B) Note in using

No matter what kind of pump, it always accompanies with a normal sound while the pump works.

Any of abnormal sound, vibration, amperage, or less water output, is the signal of latter breakdown. Stop the pump at once by switch off the power. Refer to the next page for trouble-shooting.

(C) Note after using

(1) Do not leave the pump in water when the pump to be not for use for a certain period of time, so as to prevent inside/outside being rusted caused by water.

(2) Was the pump in clean water by running it for a few minutes; clean up material in strainer or on impeller.

Store the pump in dry place after totally dried.

(D) Warranty

(1) All of our distributors will reserve sufficient spare parts for servicing the customers. This will provide the users quick, better replacement and maintenance.

(2) When you use the pump, if you find it works out of order, please contact your dealer as soon as possible.

(3) Any failure caused by human-error, in-correct power source or natural disaster; this is out of our liability of warranty.

TROUBLE-SHOOTIN

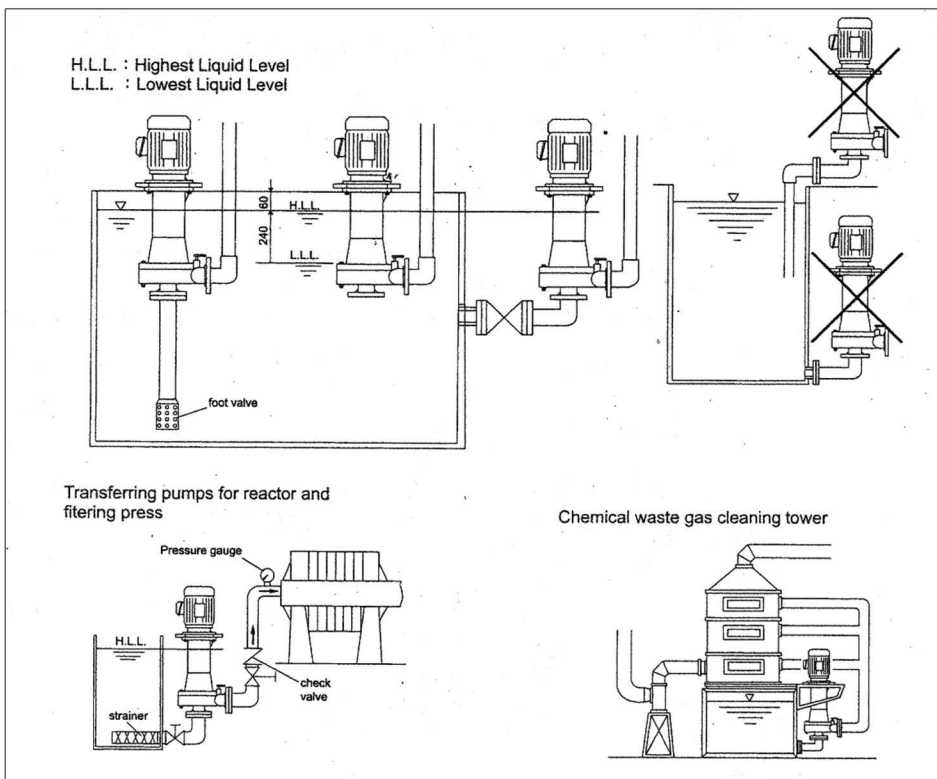
Descriptions of Troubles	Causes	Disposition Method
No running of motor	Circuit open	Check circuit lines voltage
	Poor power source	Check circuit line wires & cable
	Low voltage	Check line wires and source voltage
	Broken or inner broken-cable	Replace new cable
	Locked impeller	Clean up impeller housing or check rotating parts
	Motor protctor on or no function	See next description
	Insufficient phase of the power	Check each phase-current and wires
Motor protector holding on or no function	Over burden due to heavy sand water	Use water filter or replace a higher wattage motor
	Locked impeller	Clean up impeller house
	Insufficient phase of the power	Check each phase-current and wires
	Wrong power supply	Check power supply source and voltage
	Protector malfunction or non-refunction	Replace new one or adjust
	Protector burned-out	Replace new one
Insufficient water volume	Wearing out of impeller	Replace new impeller & base cover. adjust gap between impeller & cover
	Locked impeller by rage or ther material	Clean up
	Pipe broken	Repair
	Low power voltage	Check power voltage, wires and cable condition
	Reverse running	Change one phase with the other phase of the power line
Abnormal sound	Broken worn out	Replace new one
	Impeller broken	Replace new one or repair it
	Reverse running	Change one phase with the other phase of the power line
Leakage water in motor case	Case broken	Repair or replace new case
	Worm out-mechanical seal	Replace new one
	Displacement of mechanical seal	Adjust to proper position
	Broken cable joint	Replace new one
	Worm out-oil seal or ring	Replace new one

APPLICATIONS

- Transferring and circulating for plating solvents of filter.
- Heat exchanger circulation.
- Press and reaction tank transfer.
- Reaction mixing tank circulation.
- Nickel plating liquid.
- Transfer for tank to tank.
- For etching spray pump.
- Out of tank use for filter.
- High temperature and with particles chemical liquid can be used limitedly, such as: chemical Cuprem.

Potassium manganese, plating gold liquid and non-electrolytic-nickel plating solvents etc.

INSTALLATION NOTICE

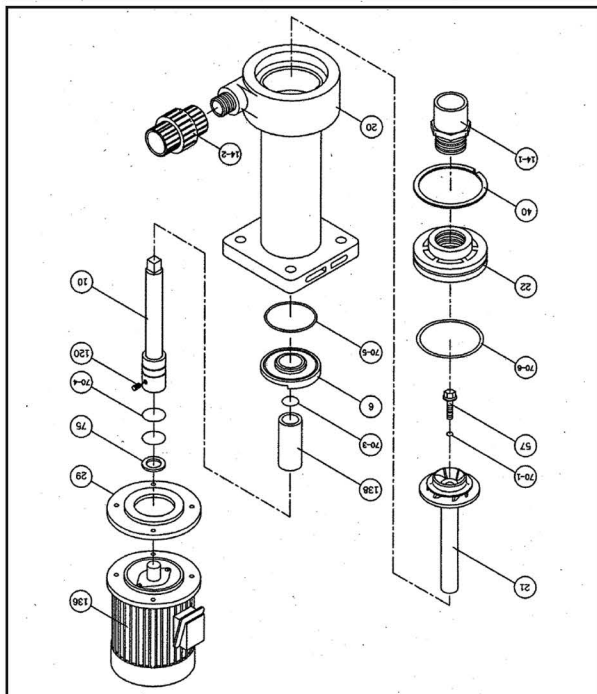
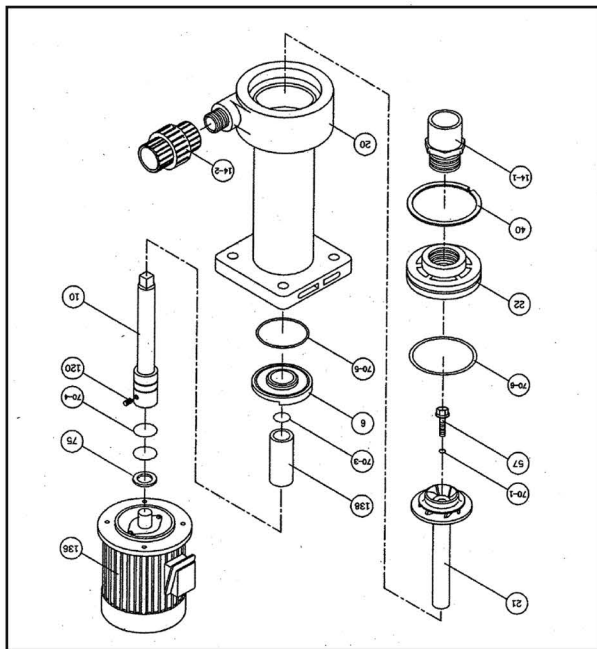


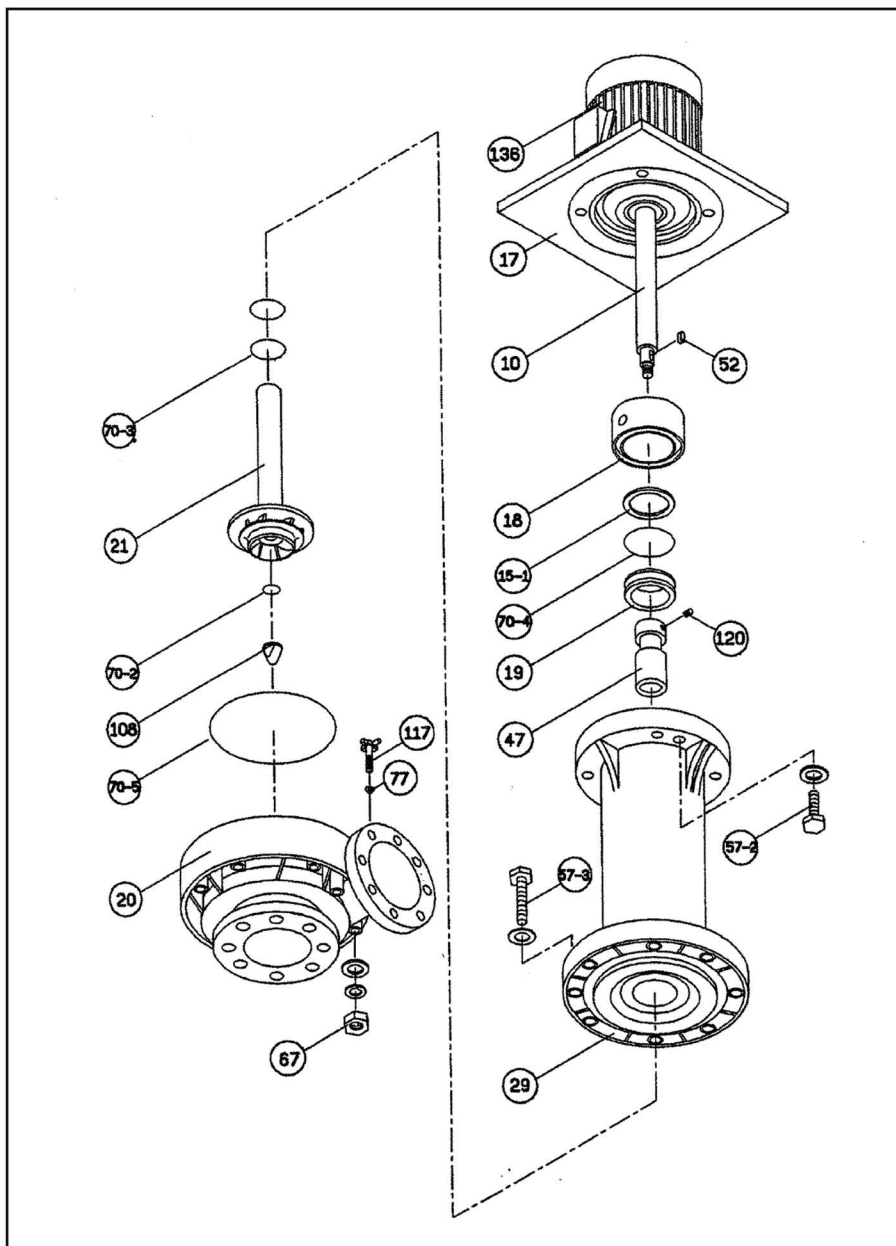
1. When starting, the liquid level must above L.L.L.

Please notice the liquid level do not over H.L.L.

2. To use GPEB inside the tank, please use Titanium, PPS or HTPVC bolts and nuts for the pump body.

3. Lay down a strainer at the suction inlet of pipe to avoid incoming rubbish and foreign matter. Please a check valve at discharge pipe line and air bypass pipe under the check valve in order to avoid breakage by water hammer.





No.	Name	Material	Quantity
10	Shaft	SUS 304	1
15.1	Seal case ring	Ceramic	1
17	Motor lower cover	FRPP (3HP,5HP) Cast iron (7-1/2hp)	1
18	seal conver	FRPP	1
19	Vagot seal	Viton	1
20	Pump casing	FRPP	1
21	Impeller	FRPP	1
29	Pump bracket	FRPP	1
47	Band-cable fixed	FRPP	1
52	Key	SUS 304	1
57-2	Bolt	SUS 304	8
57-3	Bolt	SUS 304	8
67	Nut	SUS 304	8
70-2	O-ring	Viton	1
70-3	O-ring	Viton	2
70-4	O-ring	Viton	1
70-5	O-ring	Viton	1
77	Packing	Viton	1
108	Nut	FRPP	1
117	Air valve	FRPP	1
120	Bolt	SUS 304	2
136	Motor	Cast iran casing	1

No	Name	Material		Quantity
		DE	DE	
6	Upper bracket	FRPP	FRPP	1
10	Shaft	PVC		1
14-1	Hose Couplling (UNION)	PVC		OPTIONAL
14-2	Hose Couplling (UNION)	FRPP	PVDF	OPTIONAL
20	Pump casing	FRPP	PVDF	1
21	Impeller	FRPP	PVDF	1
22	Suction cover	FRPP	PVDF	1
40	Spring	FRPP	PVDF	1
57	Bolt	FRPP	PVDF	1
70-1	O-ring	EPDM	Viton	1
70-2	O-ring	EPDM	Viton	1
70-3	O-ring	EPDM	Viton	1
70-4	O-ring	EPDM	Viton	2
70-5	O-ring	EPDM	Viton	1
70-6	O-ring	EPDM	Viton	2
75	Rubber	EPDM	Viton	1
120	Bolt	SUS 304		1
136	Motor	Cast iron casing		1
138	Sleave	PP		1



G.P.T.CO

Info@golpumps.com
www.golpumps.com

6520 NW 77 ct

MIAMI , FL 33166

PH : +1(786) 615 8984

+1(786) 452 9775

Fax : +1(786) 615 7043