



Technical Data

Submersible Well Pump - SP 50007 - SS316

Revision no.

Page:
 1

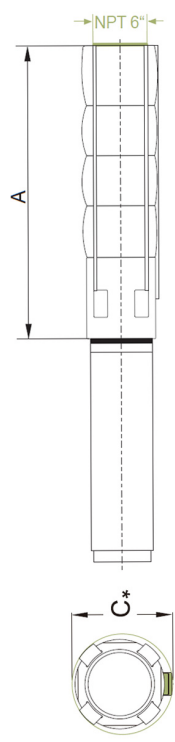
| | Receiver | From |
|---------------------|---|---|
| Company name | <input style="width: 100%;" type="text"/> | <input style="width: 100%;" type="text"/> |
| Respons. Department | <input style="width: 100%;" type="text"/> | <input style="width: 100%;" type="text"/> |
| Person in charge | <input style="width: 100%;" type="text"/> | <input style="width: 100%;" type="text"/> |
| Phone number | <input style="width: 100%;" type="text"/> | <input style="width: 100%;" type="text"/> |
| Fax no | <input style="width: 100%;" type="text"/> | <input style="width: 100%;" type="text"/> |
| E-mail address | <input style="width: 100%;" type="text"/> | <input style="width: 100%;" type="text"/> |



Brand: Gol Pumps
Model: SP 50007



Dimensions:



| Pump Type | Motor Dia. | Dimensions (inch) | | | Net Weight (lb) |
|-----------|------------|-------------------|----|----------------|-----------------|
| | | A | C* | Pump Discharge | Pump |
| SP 500-07 | 8" | 55 | 8 | 5" NPT | 106 |

| | | | | |
|---------|------------|------------|------------|-------------|
| Project | Project ID | Created by | Created on | Last update |
|---------|------------|------------|------------|-------------|



Performance Curves

Submersible Well Pump - SP 50007

Revision no.

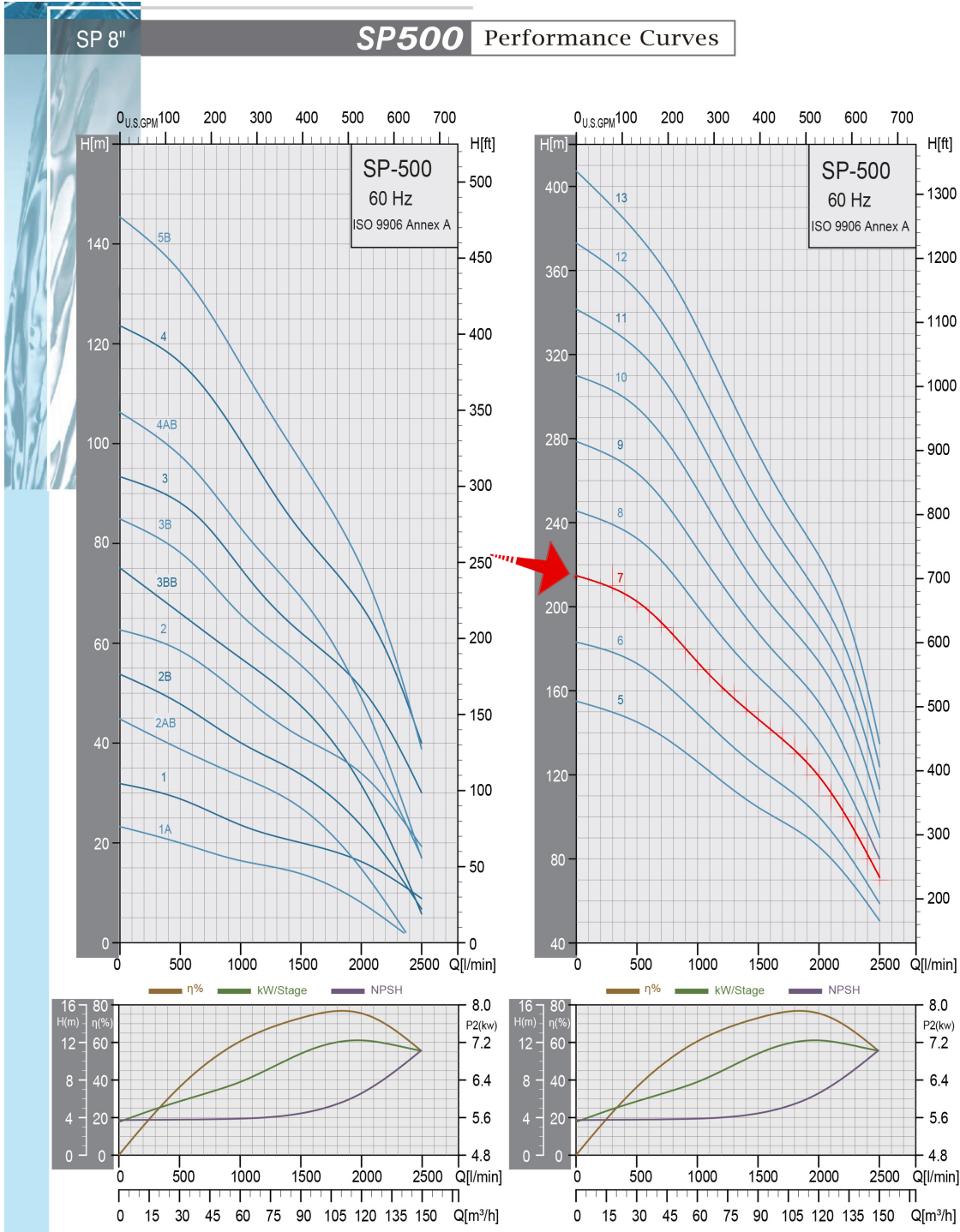
Page:
 2

Company name
 Respons. Department
 Person in charge
 Phone number
 Fax no
 E-mail address

Receiver

From

| Pump Type | Motor | | Q capacity 3450 rpm | | | | | | | | | | | | |
|-----------|-------|----|---------------------|-----|-----|-----|-----|-----|-----|-----|-----|-----|-----|-----|-----|
| | P2 | | m³/h | 18 | 30 | 42 | 54 | 66 | 78 | 90 | 102 | 114 | 126 | 138 | 150 |
| | KW | HP | G/min | 79 | 132 | 185 | 238 | 290 | 343 | 396 | 449 | 502 | 555 | 607 | 660 |
| SP 500-07 | 45 | 60 | Head(ft) | 686 | 663 | 630 | 590 | 548 | 512 | 482 | 449 | 413 | 364 | 302 | 233 |



| | | | | |
|---------|------------|------------|------------|-------------|
| Project | Project ID | Created by | Created on | Last update |
|---------|------------|------------|------------|-------------|



Parts and Materials

Submersible Well Pump - SP 5007 - SS316

Revision no. _____

Page:
 3

Receiver _____

From _____

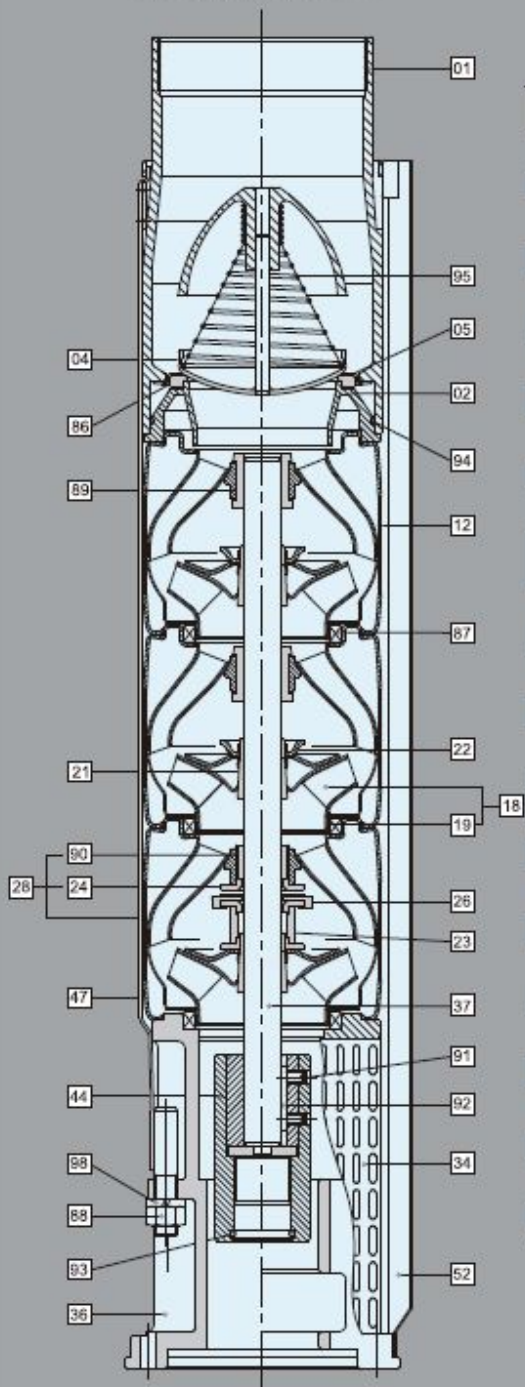
Company name _____
 Respons. Department _____
 Person in charge _____
 Phone number _____
 Fax no _____
 E-mail address _____

| |
|--|
| |
| |
| |
| |
| |

| |
|--|
| |
| |
| |
| |
| |

General Data

Example: SP500



Material Specification-8" Pumps

| Pos. | Components | Standard |
|------|------------------------------|-------------------------|
| 01 | Discharge | SUS304 / SUS316 |
| 02 | Lower Valve Seat Retainer | SUS304 / SUS316 |
| 04 | Valve Cup | SUS304 / SUS316 |
| 05 | Upper Valve Seat Retainer | SUS304 / SUS316 |
| 12 | Diffuser | SUS304 / SUS316 |
| 18 | Impeller | SUS304 / SUS316 |
| 19 | Ring Of Impeller | SUS304 / SUS316 |
| 21 | Split Cone | SUS304 / SUS316 |
| 22 | Split Cone Nut | SUS304 / SUS316 |
| 23 | Nut For Stop Ring | SUS304 / SUS316 |
| 24 | Stop Ring | SUS304 / SUS316 |
| 26 | Spacing Washer For Stop Ring | Carbon+Graphite+PTFE |
| 28 | Bottom Diffuser | SUS304 / SUS316 |
| 34 | Strainer | SUS304 / SUS316 |
| 36 | Suction Interconnector | SUS304 / SUS316 |
| 37 | Pump Shaft | SUS431 / SUS316 |
| 44 | Coupling | SUS304 / SUS316 |
| 47 | Strap | SUS304 / SUS316 |
| 52 | Cable Guard | SUS304 / SUS316 |
| 86 | Valve Seat | NBR |
| 87 | Neck Ring | SUS304+NBR / SUS316+NBR |
| 88 | Nut | SUS304 / SUS316 |
| 89 | Bearing | NBR |
| 90 | Bearing | US304+NBR / SUS316+NBR |
| 91 | Screw | SUS304 / SUS316 |
| 92 | Key | SUS304 / SUS316 |
| 93 | O-ring | NBR |
| 94 | O-ring | NBR |
| 95 | Spring | SUS304 / SUS316 |
| 98 | Spring Washer | SUS304 / SUS316 |

*AISI 316 stainless steel pumps are available on request.

| | | | | |
|---------------|------------------|------------------|------------------|-------------------|
| Project _____ | Project ID _____ | Created by _____ | Created on _____ | Last update _____ |
|---------------|------------------|------------------|------------------|-------------------|



Motor Technical Datasheet

Submersible Well Pump - SP 50007 - SS316

Revision no.

Page:
2

Receiver

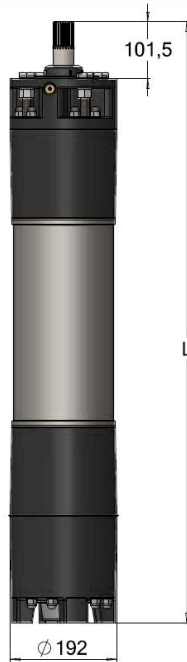
From

Company name
 Respons. Department
 Person in charge
 Phone number
 Fax no
 E-mail address

| |
|--|
| |
| |
| |
| |
| |
| |

| |
|--|
| |
| |
| |
| |
| |
| |

| Motor | Pmax | | Un | In | Ia | n (Eff. %) | | | cos (PF) | | | r.p.m | Max. water T in °F | | | Cable | Cable L | |
|--------|------|----|-----|----|-----|------------|-----|------|----------|------|------|-------|--------------------|-----|--------|-------|----------|-------|
| | HP | KW | V | A | A | 2/4 | 3/4 | 4/4 | 2/4 | 3/4 | 4/4 | n | N | PVC | PE2+PA | HT | (inch^2) | ft |
| 8F60XC | 60 | 45 | 440 | 82 | 328 | 82.5 | 85 | 85.1 | 0.72 | 0.8 | 0.85 | 3488 | 50000 | 86 | 140 | 167 | (0.9X3) | 111.5 |
| | | | 460 | 79 | 316 | 83.4 | 86 | 86 | 0.71 | 0.79 | 0.84 | 3500 | | | | | (0.4X3) | |

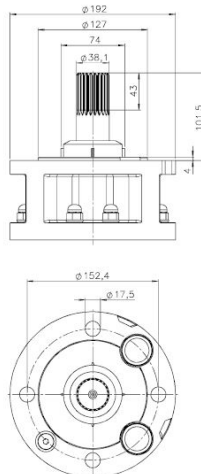


| Motor Type | Lenght | Net weight | Case dimensions (inch) | | | Gross weight |
|------------|--------|------------|------------------------|----|----|--------------|
| | inch | lb | A | B | C | lb |
| 8F60XC | 52 | 372 | 53 | 11 | 16 | 402 |

10" Coupling - Nema:

Motore 8" · Attacco 8" - NEMA

8" Motor - 8" Coupling - NEMA
 Moteur 8" - Accouplement 8" - NEMA
 Motor 8" - Acoples 8" - NEMA



| | | | | |
|---------|------------|------------|------------|-------------|
| Project | Project ID | Created by | Created on | Last update |
|---------|------------|------------|------------|-------------|



Motor Material

Submersible Well Pump - SP 50007 - SS316

Revision no.

Page:
 2

| Receiver | From |
|----------|------|
| | |
| | |
| | |
| | |
| | |
| | |

Company name
 Respons. Department
 Person in charge
 Phone number
 Fax no
 E-mail address

| Pos. | Qt. | Components | Material AISI 316 |
|------|-------|-------------------------|----------------------|
| 1 | 1 | Sand guard | NBR 90 |
| 2 | 1/2 | Ring nut | AISIS 316 / Wr 14401 |
| 3 | 2/4 | Cable-press | Plastic |
| 4 | 1/2 | Cable-press gasket | NBR 45 |
| 5 | 4 | Nut | AISIS 316 / Wr 14401 |
| 6 | 4 | Washer | AISIS 316 / Wr 14401 |
| 7 | 1 | Upper flange | AISIS 316 / Wr 14401 |
| 8 | 4 | Screw | AISIS 316 / Wr 14401 |
| 9 | 1 | Screw | AISIS 316 / Wr 14401 |
| 10 | 1 | Mechanical Seal | SIC + SIC + NBR |
| 11 | 4 | Gasket | Paper |
| 12 | 1 | Upper support | AISIS 316 / Wr 14401 |
| 13 | 2/3/4 | Seal bushing | Graphite |
| 14 | 1 | Stator | AISIS 316 / Wr 14401 |
| 15 | 3/6 | Single core round cable | EPR 0.6-1 KV |
| 16 | 8 | Upper tension rod | AISIS 316 / Wr 14401 |
| 17 | 16 | Gasket | / |
| 18 | 16 | Washer | AISIS 316 / Wr 14401 |
| 19 | 16 | Nut | AISIS 316 / Wr 14401 |
| 20 | 2 | Washer | / |
| 21 | 1 | Plug | AISIS 316 / Wr 14401 |
| 21A | 1 | Valve | AISIS 316 / Wr 14401 |
| 22 | 1 | Rotor | Duplex / Wr 14462 |
| 23 | 1 | Key | Iron |
| 24 | 1 | Lower support | AISIS 316 / Wr 14401 |
| 25 | 1 | Striker disk | Plastic |
| 26 | 1 | Screw | AISIS 304 / Wr 14301 |

| Project | Project ID | Created by | Created on | Last update |
|---------|------------|------------|------------|-------------|
|---------|------------|------------|------------|-------------|



Motor Technical Datasheet

Submersible Well Pump - SP 50007 - SS316

Revision no.

Page:
 2

Receiver

From

Company name
 Respons. Department
 Person in charge
 Phone number
 Fax no
 E-mail address

| |
|--|
| |
| |
| |
| |
| |
| |

| |
|--|
| |
| |
| |
| |
| |
| |

| | | | |
|----|---|-------------------------|----------------------|
| 27 | 4 | Thrust disk | Steel/Graphite/Resin |
| 28 | 1 | Seeger ring | Iron |
| 29 | 1 | Thrust sliding | AISIS 420 |
| 30 | 6 | Base | AISIS 316 / Wr 14401 |
| 31 | 1 | Screw | Iron |
| 32 | 1 | Nut | Iron |
| 33 | 1 | Internal over | AISIS 304 / Wr 14301 |
| 34 | 1 | Membrane | NBR 60 |
| 35 | 1 | External cover | AISIS 316 / Wr 14401 |
| 36 | 4 | Screw | AISIS 316 / Wr 14401 |
| 37 | 8 | Lower tension rod | AISIS 316 / Wr 14401 |
| 38 | 1 | Complete thrust bearing | / |
| 39 | 1 | Protective ring | PA 66 |

| | | | | |
|---------|------------|------------|------------|-------------|
| Project | Project ID | Created by | Created on | Last update |
|---------|------------|------------|------------|-------------|